

PARENT HANDBOOK

Reception - Year 12 | 2024



Nazareth



WELCOME

We welcome your family to Nazareth in 2024 and extend a very special welcome to those families joining our community for the first time.

We pride ourselves on being a community of welcome which extends to your entire family.

We look forward to working in partnership with you to support your child to aspire to excellence, experience success in all their endeavours and feel loved and valued for who they are.

In this Parent Handbook, you will find information about our unique Nazareth community and specific information relevant to our R-12 College.

Please ensure you continue to check our College website and newsletters throughout the year for the most current dates and information.

We trust that your family will experience our vision to be a Catholic community of welcome; connecting faith, family and education.

Yours sincerely,

Mr Brian Schumacher
Principal



“...working in partnership with you to support your child”



CONTENTS

WELCOME	2
WHO WE ARE	4
LEADERSHIP & GOVERNANCE.....	9
ADMINISTRATIVE PROCEDURES	12
STUDENT HEALTH & WELFARE	19
TEACHING & LEARNING.....	22
COMMUNICATION.....	25
SCHOOL BUSES	26
FINDON CAMPUS MAP	28
FLINDERS PARK CAMPUS MAP.....	29
KIDMAN PARK CAMPUS MAP	30
ST GABRIEL CENTRE MAP.....	31
CONTACT & LOCATIONS	33
USEFUL LINKS.....	34



WHO WE ARE

Nazareth is a community of welcome and connection. Our aim is to engage with families across the whole-of-life journey. From newborns and pre-schoolers, to primary and secondary students, young adults and recent graduates and then into adulthood and senior years, we are creating communities of faith, learning and wellbeing.

OUR PURPOSE

We are called to love one another

OUR VISION

We are a Catholic community of welcome; connecting faith, family and education.

OUR MISSION

Inspired by Jesus of Nazareth and our Patrons, we are people of justice, committed to building community, nourishing family life and making the world a better place.

We have three beautiful campuses, at Findon, Flinders Park and Kidman Park, incorporating an Early Childhood Centre, Reception to Year 12 College, the St Gabriel Centre and a variety of community services. Our Kidman Park Campus - a specialised campus for Year 10, 11 and 12 students, opened mid-2023.

We provide learning that is holistic, inclusive, life-giving and life-long. Our promise is that students will graduate knowing they can help lead the world, and influence positive change.

A strong partnership between staff, students, children and families ensures we are all striving for the same outcomes.

Families and friends are encouraged to participate in the many activities and wide range of programs and services within the Community, such as playgroups, seniors' social, fitness and art programs, adult education and our community cafés.



Nazareth

THE PRAYER OF THE NAZARETH CATHOLIC COMMUNITY

The Spirit of the Lord has been given to us,
for God has anointed us . . .” Luke 4:18

Just as Jesus “went down to Nazareth with (his parents)
and increased in wisdom, in stature and in favour with God”

Luke 2:51–52,

we pray that God’s wisdom will be with us
as we continue to work together
to bring our community to its full potential.

God calls each of us by name.
At every moment, we are being formed anew
into the people of God.

Lord Jesus, fill us with your light
as we turn to You each day.

Give us your life and strength,
for You are the heart of each of us,
your people.

We believe in You.
We hope and trust in You.
We love You.

Every day each person, each family,
our community can come to You
in the stillness and beauty of Your love.

Jesus, our Lord,
make our family-centered community
one in Your wisdom
where we connect with each other
as a community that holds You, Jesus of Nazareth,
at the heart
- for you were anointed to bring Good News to the poor,
justice to those who suffer,
healing for the brokenhearted
and freedom of heart for all . . . cf Luke 4:18-19

We make our prayer in Your name.

Amen.

FAITH IN ACTION

Nazareth is a place of welcome and connection where families will experience our faith in action.

Our mission as a community is to be people of justice committed to building community, nourishing family life and making the world a better place.

We are inspired by Jesus of Nazareth and our Patrons, St Mary of the Cross MacKillop, St Catherine of Siena, St Oscar Romero, St Dominic and Catherine McAuley, after whom our Houses are named.

You will notice the symbols of our faith present in our community as a sign of our Catholic identity and children and families will have many opportunities to learn more about our Catholic faith and participate in its many beautiful traditions.

Religious Education is an integral part of our curriculum and our daily routines include time for prayer, service to others and care for our environment.

Children at our College are engaged in caring for the environment through gardening and recycling initiatives, they are involved with fundraising activities for Catholic Charities, St Vincent de Paul Society, Caritas and our Nazareth Outreach Work (NOW) Projects and help build a caring and supportive community through our Buddy and Social Justice programs.

Liturgy and ritual is an essential part of our Catholic tradition and your child's participation will include class and/or morning prayer and participation in Masses to mark important events in our Catholic community.

Families are invited and welcome to participate in the community's Catholic rituals, traditions and outreach programs. This can be through joining in class prayers, attending community Masses and supporting our service and outreach initiatives.

Families can also enrol their children into the Sacramental Program where the children can become fully initiated members of the Catholic Church.

These opportunities allow children and families to engage as integral members in our Catholic school community.





A PARTNERSHIP BETWEEN SCHOOL AND HOME

At Nazareth, we aspire to excellence in learning and success for all.

We nurture a culture of achievement and personal excellence underpinned by strong leadership, high expectations, high quality teaching and learning, continuous improvement and strong home, school and community engagement.

A strong partnership between home and school is the key to success and we are a community that is committed to strengthening each family's engagement in their child's learning and wellbeing.

At Nazareth, we have adopted the Nazareth Five Habits of Excellence as a 'roadmap' to success.

The Five Habits of Excellence are attitudes and behaviours observed in students who achieve excellence in their educational outcomes.

They are:

1. Attendance,
2. Punctuality,
3. Application,
4. Work completion and;
5. Involvement in the Nazareth community.

We commit to working in partnership with families to build a shared responsibility between home and school to support all learners to practice these habits to realise their full potential.

OUR COMMUNITY

Community Activities

Coming together in community is central to our Catholic tradition and at Nazareth, families are encouraged to engage fully in the life of our Nazareth Catholic community.

The Cafés at all of our campuses are open to families and other community members every weekday morning and provide a great opportunity to meet with other families and friends over a coffee and a delicious cake.

Integrated Community Services

Nazareth has a wide range of integrated community services including parent education, early years' programs, seniors activities and family support. More information about these programs can be found on our [website](#) or through the Front Office.

Family and community members are also invited to contribute to the life of the community in ways that reflect their particular interests, skills, experience and capacity.

Getting Involved & Volunteering

We believe that every member of our community has something to offer to support our learning and community programs.

This involvement is highly valued as it helps to create and strengthen our community and build a culture of collaboration and shared commitment to our vision and mission.

Whether it's a one off or regular commitment, every contribution matters and makes a difference.

There are many ways to be involved as a member of the Nazareth community including:

- Responding to calls for volunteers to assist in community activities;
- Sports coaching
- Volunteering in our community cafés
- Parent representatives
- Tutoring at 'Homework Club' on Wednesday afternoons at the Flinders Park Campus.
- School excursions and school events.

To ensure the safety and wellbeing of all students in our care, all volunteers are required to hold a current Catholic Police Clearance OR a DCSI (Department for Communities and Social Inclusion) Working with Children Check. These can be easily obtained through the College and are mandatory to be involved in any activities at Nazareth. There is no cost involved.

If you would like to apply for a clearance, please visit the Front Office of any Nazareth campus, or contact Madeleine Kitschke, Human Resources Manager on 8406 5030 for further information.

Be involved. Be engaged. Together, our community will flourish!



KEY CONTACTS

Cross Campus Contacts

Principal	Brian Schumacher
R-12 Deputy Principal	Jeff Sochacki
R-12 Assistant Principal - Religious Identity & Mission (APRIM)	Christian Martino
Business Manager	Darren Bailey
Finance Manager	Andrea Leeming
Human Resources Manager	Madeleine Kitschke
Communications & Engagement Manager	Victoria Richardson
Pastoral Care Coordinator	Sr Theresa Swiggs
R-12 Family and Pastoral Care Coordinator	Kate Rayner
R-12 Director of Music	Jessica Joyce
R-12 Performing Arts Coordinator	Hayley Weston
7-12 Sports Coordinator (Girls)	Kahli Harmer
7-12 Sports Coordinator (Boys)	Nichollas Grygorcewicz
R-6, 7-9 Timetable Coordinator	Jacqui Clarke
Uniform Shop Manager	Despina Laurendi

Findon Campus (Primary Years, Reception to Year 6)

Head of Campus	Natalie Cameron
Assistant Principal	Kay Baker
Religious Education Coordinator	Catherine Hamilton
Learning Diversity Coordinator	Claire Krawczyk

Leaders of Teaching & Learning

Early Years	Deb Featherby
Primary Years	Jessica Parrella
Primary Years	Tom Arbon
Innovation	Olivia Bordignon

Sports Coordinator

R-6 Sports Coordinator	Lukas Antoniadis
------------------------	------------------

Timetable Coordinator

R-6 Timetable Coordinator	Jacqui Clarke
---------------------------	---------------

Kidman Park Campus (Senior Years, Years 10-12)

Head of Campus	Nicole Laube
Assistant Principal - Teaching & Learning	Elizabeth Arthur
Leader of Pathways & Partnerships	Adele Broster
Learning Diversity Coordinator	Gemma Pannell
Religious Education Coordinator (Mission)	Mirella Romeo
SACE Coordinator	Virginia Grantham
VET & Careers Coordinator	Claire Dodman
Year 10 Coordinator	Matt Rushworth
Year 11 Coordinator	Scott Taylor
Year 12 Coordinator	Diana Virgo
Timetable Coordinator	Susan Smith

Flinders Park Campus (Middle Years, Years 7-9)

Head of Campus	Adam Cibich
Assistant Principal - Teaching & Learning	Elizabeth Arthur
Assistant Principal - Student Development	Chris Catalano
Religious Education Coordinator (Mission)	Mirella Romeo
Learning Diversity Coordinator	Gemma Pannell

Timetable Coordinator

7-9 Timetable Coordinator	Jacqui Clarke
---------------------------	---------------

Leaders of Teaching & Learning (Years 7-12)

EIF, Business Innovation, Careers	Grace Gava
English	Abby Rutherford
Expressive, Creative, Performing Arts	Talia Hails
Design & Technology	Matt Rushworth
Digital Technologies	Dylan Vidler
Food Technology	Olivia Punturieri
Health & Physical Education	Daniel Bettison
Humanities & Social Sciences	Grace Rillo
Languages	Grace Gava
Mathematics	Shaun Dawson
Music	Jessica Joyce
Religious Education	Moira Steves
Science	Janelle Ruthven

For enquiries please email:

info@nazareth.org.au

LEADERSHIP & GOVERNANCE

The Nazareth Advisory Board, its subcommittees and the Leadership Teams at Nazareth are committed to ensuring ongoing integrative leadership of Nazareth that is forward-thinking, innovative and open-minded.

These groups lead a progressive approach to education, care and community development and its members bring a diverse yet complementary range of skills, experiences and perspectives to this work.

Read more about our [Leadership and Governance on our website](#).

NAZARETH LEADERSHIP

NAZARETH LEADERSHIP TEAM

Principal	Brian Schumacher
R-12 Deputy Principal	Jeff Sochacki
Head of Campus - Kidman Park	Nicole Laube
Head of Campus - Flinders Park	Adam Cibich
Head of Campus - Findon	Natalie Cameron
R-12 Assistant Principal - Religious Identity & Mission (APRIM)	Christian Martino
Early Years Director	Natasha Walc
Business Manager	Darren Bailey
Human Resources Manager	Madeleine Kitschke
Communications & Engagement Manager	Victoria Richardson
Executive Assistant to the Principal	Emma Williamson

SENIOR LEADERSHIP TEAM

R-12 Deputy Principal	Jeff Sochacki
Head of Campus - Kidman Park	Nicole Laube
Head of Campus - Flinders Park	Adam Cibich
R-12 Assistant Principal - Religious Identity & Mission (APRIM)	Christian Martino
Leader of Pathways & Partnerships	Adele Broster
7-12 Assistant Principal - Teaching & Learning	Elizabeth Arthur
7-12 Learning Diversity Coordinator	Gemma Pannell
PA to the R-12 Deputy Principal	Linda Parish

FLINDERS PARK LEADERSHIP TEAM

Head of Campus - Flinders Park	Adam Cibich
Assistant Principal - Teaching & Learning	Elizabeth Arthur
Assistant Principal - Student Development	Chris Catalano
Learning Diversity Coordinator	Gemma Pannell
PA to the Head of Campus	Marisa Dinham

FINDON LEADERSHIP TEAM

Head of Campus	Natalie Cameron
Assistant Principal	Kay Baker
Leader of Teaching & Learning - Early Years	Deb Featherby
Leader of Teaching & Learning - Primary Years	Jessica Parrella
Leader of Teaching & Learning - Primary Years	Tom Arbon
Leader of Teaching & Learning - Innovation	Olivia Bordignon
Religious Education Coordinator	Catherine Hamilton
Learning Diversity Coordinator	Claire Krawczyk
PA to the Head of Campus	Sue Karidis

THE HOUSE SYSTEM

At Nazareth, all students and staff belong to a House. There are five Houses.

The aim of the House system is to create a sense of connection, belonging and identity for each student in a smaller group within the College. It is also to foster school 'spirit' through having fun.

Catherine, Dominic, MacKillop and McAuley Houses are named from the traditions of the four former schools: Siena, Mater Christi, Our Lady of the Manger and Cardinia which have come together to form Nazareth. Romero House has been chosen as a symbol for social justice and social inclusion which are integral to our community.



At the Flinders Park campus, each House is facilitated by a House Leader and a Year 9 Coordinator. Houses are made up of students divided into vertically grouped Mentor classes consisting of students from Years 7 to 9. The role of the Year 9 Coordinator is to support the transition of Year 9 students as they participate in key learning and wellbeing programs and move towards secondary schooling and pathways and partnerships.

At the Kidman Park campus, Year 10-11 students are divided into vertically grouped Mentor classes supported by Year Level Coordinators allowing the delivery of more tailored wellbeing programs and activities. Year 12 students will be part of a stand-alone Mentor Group structure enabling them to build strong relationships within the cohort.

Catherine House (Green):

Dominic House (Gold):

MacKillop House (Red):

McAuley House (White):

Romero House (Blue):

House Leader - Middle Years (7-8):

House Leader - Middle Years (7-8):

House Leader - Middle Years (7-8):

House Leader - Middle Years (7-8):

House Leader - Middle Years (7-8):

Year 9 Coordinators:

Year 10 Coordinator:

Year 11 Coordinator:

Year 12 Coordinator:

Du Nguyen

Carli Farmer

Joanne Dametto

Nazarin Iaconis

Daniel Uglesic

Mrs Jess Palasis

Mr Stefan Roussos

Mrs Jess Bedford

Mr Matt Rushworth

Mrs Kelly May

Mrs Diana Virgo

House activities at the Findon Campus are led by the R-6 Student Wellbeing Coordinator ([please see page 9](#)). Read more about our [Patrons and House System on our website](#).

STUDENT LEADERSHIP

Nazareth aims to provide all students with opportunities for involvement in their school life, to develop 'thriving people, capable learners, and leaders for the world God desires'. Consistent with the spirit and vision of the College, the student leadership program at Nazareth provides opportunities for students to engage with the school community as well as the wider community.

The aims of the Student Leadership program are to:

- Provide a forum in which all students can be represented to the Principal and other College Leaders
- Conduct and participate in activities which support the ethos of the College and promote the wellbeing of students within the College
- Develop student's confidence and skills in communicating with others, working as effective teams, and negotiating and collaborating with other students and staff.

These aims are achieved under the philosophy that leaders are those who serve others. The Student Leadership Team consists of representatives from Reception to Year 12 including House Leaders, Eco Chiefs, Social Justice and Ministry Leaders, Learning Area Captains and Ambassadors, and Culture and Diversity Leaders.

ADMINISTRATIVE PROCEDURES

COLLEGE HOURS

Findon Campus

First Bell (students to be in class): 8:50am
(Teacher on duty from 8:30am)

Recess: 11:00am to 11:20am

Lunch (Reception - Year 3): 12:40pm to 1:20pm

Lunch (Year 4 - Year 6): 1:20pm to 2:00pm

Dismissal: 3:10pm (Teacher on duty until 3:30pm)

Out of School Hours Care (OSHC)

Nazareth OSHC Service operates daily at the Findon Campus. We are committed to providing quality care for families within our community. Bookings are essential. To access a place for your child, please complete an OSHC Enrolment Form (available on the [College website](#), from Student Services or the OSHC Coordinator).

- Before School Care operates from 7:00am - 8:30am
- After School Care operates from 3:10pm - 6:00pm

Care is also available for school holidays, pupil free days and on days of early dismissal (eg: end of term).

OSHC fee information can also be found on our website.

Child Care Subsidy

Families that wish to access Child Care Subsidy (CCS) will need to contact the Department of Human Services. The Child Care Subsidy is paid direct to the OSHC to reduce out-of-pocket costs for families. Further information for families regarding childcare and government assistance may be found [online](#).

Should parents wish to contact their children or a teacher during school hours, they should make this request through Student Services at either Campus.

Findon Campus Student Services: Phone 8406 5110

Flinders Park and Kidman Park Campuses Student Services: Phone 8406 5310

SUPERVISION OF STUDENTS

Your child's safety and wellbeing while at school is a priority. Teachers at the Findon Campus supervise children in the yard from 8:30am - 8:50am and from 3:10am - 3:30pm. Parents are responsible for their own children outside of these times. Students who are onsite outside of these hours and unsupervised will be placed in OSHC and charges will apply.

RECESS & LUNCH BREAKS

There is to be no food or drink on the ovals or tennis courts. Each person is responsible for keeping the areas used clean, tidy and free from litter. In this way we show respect and care for ourselves, for those with whom we share the areas, and for the environment.

Hot/Wet Weather: During days of excessive heat or rain, students are permitted to access approved indoor areas.

Flinders Park Campus 7-9

MG: 8:45am - 9:00am

Lesson 1: 9:00am - 9:40am

Lesson 2: 9:40am - 10:20am

Recess: 10:20am to 10:40am

Lesson 3: 10:40am to 11:20am

Lesson 4: 11:20am to 12:00pm

Movement 12:00pm - 12:05pm for Middle School only

Lesson 5: 12:05pm to 12:45pm

Lesson 6: 12:45pm to 1:25pm

Lunch 1: 1:25pm to 2:05pm

Lesson 7: 2:05pm to 2:45pm

Lesson 8: 2:45pm to 3:25pm

Dismissal: 3:25pm (Teacher on duty until 3:45pm except specified duties which conclude at 4:05pm)

Kidman Park Campus 10-12

Lesson 1: 8:45am - 9:25am

Lesson 2: 9:25am - 10:05am

Recess: 10:05am - 10:25am

MG: 10:25am - 10:45am

Lesson 3: 10:45am - 11:25am

Lesson 4: 11:25am - 12:05pm

Lesson 5: 12:05pm - 12:45pm

Lesson 5: 12:45pm - 1:25pm

Lunch: 1:25pm - 2:05pm

Lesson 7: 2:05pm - 2:45pm

Lesson 8: 2:45pm - 3:25pm

Before and After School

The school day at the Kidman Park campus commences at Lesson 1. The campus is open to senior students for quiet study until 5:00pm Monday-Thursday and until 4pm Fridays.

The Veritas Resource Centre is open from 8:00am - 5:00pm excluding Friday where the centre is closed from 4:00pm. The Veritas Centre is also open during recess and lunch times every day for reading, research and personal study.

TERM DATES

The following term dates have been approved by the South Australian Commission for Catholic Schools (SACCS).

Term Dates 2024

Term 1	Monday 29 January to Friday 12 April
Term 2	Monday 29 April to Friday 5 July
Term 3	Monday 22 July to Friday 27 September
Term 4	Monday 14 October to Friday 9 December*

* Please note each year level at the Flinders Park and Kidman Park Campuses will conclude the year at different times. These dates will be communicated with families during the year.

PUPIL FREE DAYS & PUBLIC HOLIDAYS

	Public Holidays	Staff Formation & Learning Days
Term 1	Monday 11 March (Adelaide Cup Day) Friday 29 March (Good Friday) Monday 1 April (Easter Monday)	
Term 2	Thursday 25 April (ANZAC Day) Monday 10 June (King's Birthday)	Monday 29 April (ECC-12) Friday 7 June (R-12)
Term 3	Monday 7 October (Labour Day)	Friday 6 September (ECC-12)
Term 4		Monday 14 October (R-6) Friday 1 November (7-12)





STUDENT ABSENTEE PROCEDURE

Informing Us Of Absences

If your child is not going to be at school (for any reason), it is imperative that you inform the school by:

- Phoning the 24 hour student absentee phone number before 9:00am.
(R-6) Absentee Line: 8406 5105
(7-12) Absentee Line: 8406 5305
- OR In a case where you know your child will be absent the following day please inform the teacher and Student Services directly.

Teachers check an electronic class roll. If a student's name appears without a verified explanation, Student Services will send an SMS to a parent's/caregiver's mobile to confirm the absence. Class/Mentor Group teachers will follow up upon the student's return to school.

Late Arrival Procedures

If a student arrives late (after 8:50am at Findon / after 8:40am at Secondary campuses) students report directly to Student Services to sign in. Failure to do so will result in being marked as absent and may mean that an SMS is sent to the parent's/caregiver's mobile phone. Once signed in, the student must go directly to their class.

Leaving During the School Day

Students at the Findon Campus are not permitted to leave the school grounds during school hours. If parents wish a child to do so, it is expected that this is communicated with your child's class teacher. When collecting your child for an appointment, please present to the Campus Reception area. If your child is to be collected early, please notify Student Services and the class teacher by phoning 8406 5110.

If required, parents/caregivers of students at the Flinders Park and Kidman Park Campuses and St Gabriel Centre may request permission for their daughter/son to leave school before the designated finish time by phoning Student Services on 08 8406 5310. We strongly encourage families to arrange appointments out of school hours.

Year 12 Students

Year 12 students have access to greater flexibility than any other year level, as a result of their study line. Once granted 'flex' permission to do so by their Year 12 Coordinator and

parent/caregiver, Year 12 students may arrive late or leave early where their study lessons start or end the day. Year 12 students are not permitted to leave during the middle of the day (i.e. during study lessons, or recess and lunch times). A dedicated study area is available to students who have study lessons scheduled during the day and students who have a timetabled study lesson must report to the Study Room.

Year 12 students and their families should be advised that these arrangements are a privilege, designed to better prepare our senior students for life beyond secondary schooling. Students who do not adhere to College expectations, will have this privilege withdrawn. Please note that students are not permitted to leave College grounds at any other time throughout the school day (unless Leaving During the School Day procedures, as outlined above, have been followed).

EXTENDED ABSENCE

We strongly discourage families from arranging holidays during the school term. Issues arise from these extended absences which are varied and dependent on the length of time missed, the year level of the student and the nature of the subject in the learning program. Whilst the College understands that there are many reasons why parents/caregivers would take their children out during term time, it is important to note that in some situations this may have a significant impact on your child's learning.

In the event that a family elects to withdraw their child from school (for eg: for a family holiday), they must:

- Complete an [ED175 Form, available from the College website](#) and return it to the College via email to info@nazareth.org.au at least two weeks prior to the extended absence.

In Middle and Senior Years we expect that students will:

- Inform their subject teachers of the absence.
- Ensure they are aware of the topics/concepts they are missing in any summative assessments.
- Where possible, complete work to keep up to date with the learning plan.
- Negotiate any extension for summative assessment where applicable through the correct protocols.



INFORMATION & CHANGE OF DETAILS

It is very important that the information we have about your child is accurate and current. Student Services must be notified of any changes, particularly changes to address (temporary or permanent) and phone numbers - to avoid any unnecessary confusion when trying to contact you. The parent/caregiver contacts of all new students have been sent a link to an Online Family Information Form which will provide us with a comprehensive set of information in relation to your child. This form only needs to be completed once. Thereafter, for existing students, changes to details are maintained through our online consent form and student medical information software, Consent2Go.

Information regarding your child can be updated through Consent2Go in the following ways:

- Through the profile update invitations that are sent from the College via email from time to time.
- When responding to an event/excursion invitation for your child. This will update the information held about your child in our database.
- Via the link <https://www.nazareth.org.au/update-student-details>. You will need to enter a valid email address associated with a student to receive a profile update invitation.

Please note that by default, parents and caregivers are only able to view their own contact details in relation to their child and not any other parent/caregivers associated with the child. If you would like the details of the other parent/caregivers to be visible, you can request this by contacting Student Services.

PERSONAL PRESENTATION & UNIFORM

Students of Nazareth take pride at all times with their grooming and presentation. In this way, they support each other to develop a strong sense of identity and community. It is essential that parents support their child/children in the wearing of the correct College uniform.

Please refer to the [Personal Presentation and Uniform Requirements on our website](#) for particular information regarding hair, jewellery, make-up etc.

College Uniform Shop - 260 Grange Road, Flinders Park

Open Tuesdays from 8:30am - 4:30pm and Thursdays from 8:30am - 8:00pm.

Contact: Desi Laurendi (Uniform Coordinator), on 8351 7486

For information and prices, please refer to the [Nazareth website](#) or email us at uniform.shop@nazareth.catholic.edu.au

To ensure that all lost property can be easily identified and returned to its rightful owner, all clothing, including shoes and socks should be clearly named. The College is unable to take responsibility for student belongings.

TRANSPORT, PARKING & SCHOOL CROSSINGS

There is limited parking in our Campus car parks, and it is important to note these spaces are also used for families and community members attending other community activities.

For the safety of all in our community, and to prevent frustration and congestion, it is recommended that parents park in the surrounding streets or local public car parks, adhering to the relevant Council parking directions and restrictions. Please ensure you park correctly – not obscuring driveways or other vehicles and abide by the 40km speed limit in our neighbouring streets to ensure the safety of students, staff, and other motorists. The entrance and exit to our Campus car parks must be kept free at all times.

The 'Kiss 'n Drop' zones which are supervised by staff are the Hartley Road school car park (Flinders Park), Crittenden Road school car park (Findon) and Almond Avenue (Findon). Student drop-off and pick up should be from the designated left lane in the car park. We ask that students exit vehicles from the left-hand side only to avoid traffic in the right-hand lane of the car parks. These areas are to be used for pick up and drop off of students for 20 minutes before and after the school bells. 'Standing' in this area is for no longer than 2 minutes. If parents are using the 'Kiss 'n Drop' zones to drop off or pick up students, drivers are not permitted to leave the vehicle. At the Kidman Park Campus, we ask that you utilise the Ring Road.

Please be alert to children and others at all times and limit your speed to 10kms as directed and actively encourage child/ren to use the paths provided and not walk across the car park. Please ensure you have your permit displayed if you are using the disabled parking spaces within our carparks. We provide significant bike rack space in a secured and video surveillance monitored space for children who cycle to the Kidman Park and Flinders Park Campuses or St Gabriel Centre.

There are teachers on duty at the pedestrian crossings on Hartley Road (Flinders Park), Crittenden Road (Findon) and Almond Avenue (Findon) before and after school to ensure the safety of all children. Please support them by encouraging your child/ren to follow their instructions. Please see [Page 26](#) for school bus information and visit our [website](#) for more traffic safety information.

STUDENT ID CARDS (YEARS 7-12)

Early in the year, each student will be issued with a Student Identification Card. This card is valid for the school year and must be presented when borrowing books, for textbook hire and when using public transport, to enable students to access concession fares.

The initial cost of this card is covered by the College. However, if the card is lost, stolen or mutilated, students will be required to pay \$10 for a replacement card which will take approximately one week to re-issue.

It is important to note that students aged 15 years and over must produce their school ID card immediately upon request, when travelling on a bus, train or tram at any time. Failure to do this may result in the regular full fare being charged and an Expiation Notice ('on the spot fine') may be issued (current fine is \$190).

These cards expire on February 28 each year. Photos for Nazareth Student Identification Cards are taken in early November and students are issued with their new card when they commence school the following year.

New students commencing at Nazareth will have their photo taken as soon as possible after commencing. This photo will then be forwarded for processing and the card will be issued approximately two weeks later.



LOCKS, LOCKERS AND FOBS

All new students to the **Flinders Park campus** are expected to purchase the approved combination lock which is a compulsory item on the booklist. Locks are distributed to students by the school at the beginning of Term 1 and provide security for the student's possessions. Students select their own code and should not disclose their combination to other students. Lockers are to be kept locked at all times. New locks can be purchased from the Veritas Centre at a cost of \$35, including 12 months warranty (with the exclusion of the lock being damaged, including by being dropped).

Students attending the **Kidman Park campus** will be allocated a locker with an in-built combination lock, and a fob for access to the building. Access fobs are issued along with laptops and chargers, and should they be misplaced, will incur a \$10 replacement fee. We ask that students inform the IT team immediately if they believe their fob has been lost or stolen.

LOST PROPERTY

Lost property is collected near Student Services. Any unclaimed articles will be washed and donated to children in need at the end of the term.

CANTEEN & FOOD

Our College utilises Rory's School Lunches as our Canteen Management Company.

Purchasing and ordering of food differs slightly between campuses. The method of ordering is online through the QKR app, available on Apple and Android devices. [Canteen menus can be found on our website](#). For help, please access our '[How To Guide](#)'.

Nazareth Findon Campus is an Allergy Aware Environment.

We have a number of students with severe allergies, therefore, we ask that students do not share food and that nut and egg products are not brought to school. Parents / Caregivers will be notified of class celebrations or treat days so they may accommodate their children's needs if allergies present a problem.

USE OF THE ST SEBASTIAN CENTRE (GYMNASIUM) AT THE FLINDERS PARK CAMPUS

The gym is closed to all students before school. Students are permitted to access the gym to play sport during recess and lunch breaks, providing the following rules are followed:

- No spectators
- No loitering unless participating - students to engage in safe, game-based play
- No ball games that require kicking
- No food or drink
- Any equipment borrowed must be from the green bin, stored under the bleachers
- ID exchanged for equipment
- ID will be re-issued to student when equipment is returned.

TOYS, GAMES & ELECTRONIC DEVICES

Please do not send toys, balls etc to school with your child. Bringing things from home often causes unnecessary problems if they are broken, lost or stolen. Nazareth recognises the need for some students to have access to a mobile phone at times. However, between school hours, students are not permitted to use their phones. Our [Mobile Phone and Electronic Devices Policy is available on the Nazareth website](#). Mobile phones will be confiscated if students breach this policy. This policy also applies to other electronic devices e.g. iPod, Nintendo, etc.

STUDENT ACCEPTABLE USE OF TECHNOLOGY

We acknowledge the increasing use of Information and Communication Technologies as a learning and business tool in schools. With access to these resources comes both privileges and responsibilities. Nazareth expects technology to be used in a safe, responsible, respectful and ethical manner at all times. All students sign Acceptable Use Agreement.

Full details about this can be accessed on the [College Forms and Information section of the College Website](#).

SCHOOL LOAN DEVICES

A 'One to One Device' program for students from Reception to Year 12 at Nazareth provides students quality, contemporary world teaching and learning. The cost of the school loan device is included in the tuition fee.

Students from Reception to Year 3 have access to iPads. Students from Years 4-12 receive HP laptops.

Devices remain the property of Nazareth, and will be managed by the College Computer Network Team. At the request of the College, students may be required to return their laptop and all associated accessories at the end of the year for maintenance/rollover. When students leave the College they are required to return their laptop in full working order with all associated accessories.

As a result of these School Loan Devices (SLD) teaching and learning will be enhanced by:

- Enabling access to technology at every lesson
- Having increased access to information
- Allowing the use of online resources and subject software
- Facilitating student-centred learning
- Increasing student and teacher communication and feedback
- Allowing students to draft, edit and publish their work at any time
- Facilitating self-directed and self-managed learning
- Developing a real-world learning experience in our digital age

Full details of the policies and procedures surrounding School Loan Devices can be accessed on the [College Forms and Information section of the College Website](#). Information is provided to families in Term 4 each year, to outline the program, policies and procedures in preparation for the following year.

FINANCIAL INFORMATION

Our finance staff are located at the Findon Campus.

Kidman Park Finance Office

344 Findon Road, Kidman Park SA 5025

8:30am – 4:00pm (Monday - Friday during the term)

T: 8406 5032 | E: finance@nazareth.org.au

Business Manager

Mr Darren Bailey

Finance Manager

Miss Andrea Leeming

Senior Finance Officer

Mrs Larissa Lambert

Finance Officer

Mrs Melanie Calleja

Families may choose to collect or submit forms and pay their school fees by cash, credit card or EFTPOS at the Flinders Park Reception.

All current finance information and forms are available on our website www.nazareth.org.au/college/enrolment/fees.



STUDENT HEALTH & WELFARE

A holistic approach to student wellbeing is paramount. Accordingly, at Nazareth we adopt relational and proactive decision making processes when working with students to build a positive and connected learning environment.

MEDICAL INFORMATION

It is important parents/caregivers ensure medical information and emergency contact details are kept up to date via Consent2Go or by contacting the College.

Illness

A child showing any indication of illness should stay home until they are well. **It is recommended that a child remains home for 24 hours after any gastro-like symptoms.**

First Aid Procedure (R-6)

At the Findon Campus, learning areas and staff on yard duty have first aid kits for minor first aid requirements such as cuts and abrasions. Students who need more specialised first aid are sent to Student Services. Parents/caregivers of students who visit the sick room will be notified via SEQTA.

When a child is ill or injured and needs to go home or be seen by a doctor, they must report to Student Services whereby a parent/caregiver will be notified by phone and requested to collect their child. Students are not permitted to contact their parent/caregiver themselves.

First Aid Procedure (7-12)

In Years 7-12, any student who requires first aid will be treated by Student Services. When a child is ill or injured and needs to go home or be seen by a doctor, they must report to Student Services whereby a parent/caregiver will be notified by phone and requested to collect their child. Students are not permitted to contact their parent/caregiver themselves by mobile telephone. Contact with parents/caregivers will be made by Student Services.

Medication (R-12)

The provision of medication is the responsibility of parents/

caregivers and will only be administered by the school's First Aid Officer. Only medication in original packaging will be given. Medication will only be given to students with written consent from their General Practitioner or medical authority.

A medical management plan is required for all chronic conditions e.g. asthma, diabetes and allergies, outlining the student's condition, treatment and emergency signs and procedures. This plan must be updated as required, and all medications must be presented to Student Services. Students in Years 7-12 may accept the responsibility for their own medication, including the use of aerosol 'puffers'. It is the parents/caregiver's responsibility to ensure that the medication is in original packaging from the doctor or pharmacist, outlining the dose and frequency of the medication.

If your child requires an Epi Pen it is the parent's/caregiver's responsibility to provide one to Student Services. It must be clearly marked with the child's name and must be replaced prior to expiry.

When medication expires, parents/caregivers will be notified and it is imperative that replacement medication is provided, as the school is not permitted to administer expired medications.

This information is taken from "Catholic Education Office, First Aid Guidelines" and the Nazareth First Aid Policy.

Short Term Medication

Generic medication e.g. Panadol is not kept at school. It is the parent's/caregiver's responsibility to ensure that any short term medication is clearly marked with the child's name and the dosage is clearly marked on the original bottle or packet and is accompanied by a signed letter from a medical practitioner outlining the administration procedures. Medication will only be administered by a qualified Senior First Aid staff member.

Under no circumstance will medication be dispensed to students without written consent from a medical authority (e.g. a letter or prescription script from the GP). If medication is given to a student, it will be recorded on SEQTA.

Inclement Weather Policy

Our learning areas are air-conditioned, so children are expected to stay at school rather than go home early on hot days. If your child suffers unduly from the heat, please discuss alternate arrangements with your child's class teacher. When the weather is above 35 degrees, or wet, students will remain indoors at break times.

Sun Protection

At the Flinders Park and Kidman Park Campuses, the Nazareth hat is compulsory for outdoor lessons and optional for recess and lunch time. At the Findon Campus, our policy is 'Hat on, Play on'. This rule applies to Term 1 and Term 4. Recent research indicates low levels of Vitamin D in children of school age. The UV levels in Term 2 and Term 3 usually do not pose a risk and a hat is not required.

STUDENT WELLBEING

"It is vital that when educating our children's brains that we do not neglect to educate their hearts" - Dalai Lama

Student wellbeing at Nazareth supports young people in developing their social and emotional capacity. We aim to develop the whole person and provide students with the opportunity to explore the contemporary world around them. A holistic approach to Student Wellbeing is important to us. We value relationships as a key part of developing our community and we aim to work in partnership with students and families, to ensure all members of our community feel a sense of belonging.

We offer students a range of opportunities through our curriculum and community programs. Students are involved in learning experiences around contemporary Cyber Safety programs. They are immersed in Positive Psychology approaches in the classroom and are supported through Restorative Practices when facing and resolving conflict. Our goal is to provide students with an understanding of their place in their world and to help them succeed. We believe our school focus on wellbeing will lay the foundation for students to develop their own personal, social and emotional capabilities to support them in becoming connected, active and informed citizens of the future.

CODE OF BEHAVIOR

At Nazareth we provide opportunities for students to explore, create and sustain positive relationships, and when incidents occur, a restorative approach is taken. We aim to guide each child towards care for others, whilst also taking ownership over their own choices and actions. This highlights the importance of relationships and is a way for students to develop an understanding of empathy for others. A restorative approach creates opportunities for those involved in a conflict to work together to understand, clarify and resolve the incident and work towards repairing the harm caused.

At Nazareth we support students to follow three fair and reasonable expectations to maintain a safe and happy school environment for all. Therefore, these expectations are non-negotiable, as the wellbeing of our students is paramount. These expectations not only exist inside our school community, but are expectations that are valued in all aspects of life.

- **Using appropriate language:** Effectively communicating with others is an essential life skill. At Nazareth we teach the importance of speaking to others in an appropriate manner and with respect.
- **Treating ourselves, each other and the environment with respect:** All students have the right to feel safe when they are at school. At Nazareth we promote a safe school setting and help students develop respect for themselves, others and the environment.
- **Following instructions:** In order to ensure that students have every opportunity to develop into the best people they can be, we have boundaries and expectations to guide them. These expectations aim to keep everyone safe and allow optimal teaching and learning to take place. Following directions and instructions from teachers and trusted adults ensures students are safe and understand the limits and boundaries of the school environment.

BULLYING AND HARASSMENT

At Nazareth we believe every person has the right to be safe and every person has the right to learn and build relationships free from anxiety caused by bullying.

If your child's behaviour causes anyone to feel unhappy or unsafe, it is considered by Nazareth to be harassment. Consistent ongoing negative behaviour is bullying.

Nazareth does not tolerate harassment or bullying and will work to prevent and address these behaviours should they occur within the school environment in line with our policies and procedures. Please refer to the R-12 Bullying & Harassment Policy and Personal Responsibility & Wellbeing Procedures on our [website](#).

Bullying and harassment that takes place outside the school environment and school hours is the responsibility of parents/caregivers. Where this behaviour impacts on the learning environment within the school both staff and parents will work together to address the situation.

STUDENT COUNSELLORS

From time to time situations arise where counselling support can be beneficial for our students and families. Students and/or parents can contact our counselling team to make an appointment with our counsellors via Student Services, in person or by phone.

Your child's class teacher/mentor teacher and/or House Leader are also available for support throughout your child's learning journey.

AFTER SCHOOL EMPLOYMENT

Nazareth acknowledges and accepts that many students are employed in casual part-time positions outside of school hours. We recognise the positive character-building value of out-of-school-hours employment and the opportunity for students to develop important work-related experiences and skills as well as social skills. However, we are aware that in some instances the demands made by such employment may conflict with students' learning and school organisation. We therefore urge parents/caregivers to encourage their children to arrange a suitable work schedule which does not impinge on any part of the school day or study commitments. In particular, the scheduled starting time for work can be problematic, i.e., students are expected to remain at school until the end of the school day. From time to time, students may be required to be involved in various out-of-school-hours activities such as practices, or performances, and these too will need to be given priority.





TEACHING & LEARNING

CATHOLIC CULTURE

Religious Education within the Catholic context utilises a holistic approach which encourages our students to explore their interconnectedness with the world around them and with God. At Nazareth, opportunities exist within the formal curriculum and the faith life of the College to learn about our Catholic traditions and our connection to the mission of the wider Church.

The framework of the curriculum is the 'Crossways' document which has been developed by the Catholic Education Office for use in Catholic schools in South Australia. In addition to this, the Archdiocese has mandated the use of the 'Made in the Image of God' framework which is a developmental teaching resource for Human Sexuality.

The integration of these documents into the formal and informal teaching programs of the College enables our students to reflect on the giftedness of their own creation and the sacredness of their relationships with others in the community.

From Reception to Year 12, Nazareth is continually examining the needs of young people as we prepare them for life as critical, informed and motivated contributors to the local community and beyond.

The learning and physical design of Nazareth is based on core beliefs about student-centred teaching and learning, lifelong learning, the interconnectedness of knowledge and the importance of human communication in all its forms, therefore the College is a centre of learning that:

- Constructs a rich curriculum of high intellectual quality;
- Facilitates a personalised and supportive classroom environment;
- Creates a climate that values and acknowledges similarities and differences in the school and wider community;
- Practises a constructivist approach where students' own knowledge, skills and understandings are the starting point to connect with new knowledge and the world;
- Provides access to an ICT rich environment, facilitating learning anywhere and anytime;
- Provides opportunities for students from all educational, cultural and socio-economic backgrounds to be successful;
- Creates programs and methodology that responds to current and future interests and needs of its students.

All College Curriculum Handbooks, detailing each subject offered at each year level can be accessed on the [Curriculum Handbooks page of our College website](#).

HOMEWORK COMPLETION & SUBMISSION OF WORK

Homework tasks assist students to take responsibility for organising their time and learning opportunities. Children are given tasks to carry out and complete which will aid them in their learning.

It is expected that students will spend time on set homework or revision of the day's learning. In addition to this, students should allocate time for extra study, particularly prior to major tests and examinations. At Nazareth we expect students to take responsibility for:

- Reading for pleasure
- Reviewing material presented in lessons, as instructed by the teacher
- Completing work not finished in lessons
- Working consistently on assignments (set over a longer period)
- Revising for tests.

The following times act as a guideline as to what should be anticipated at each year level as an appropriate standard:

- Reception – Year 2: No longer than 20 minutes
- Years 3 & 4: Approx. 30 minutes per night
- Years 5 & 6: Approx. 45 minutes per night
- Year 7: Maximum 5 hours per week
- Year 8: Maximum 6 hours per week
- Year 9: Maximum 6 hours per week
- Year 10: Maximum 8 hours per week
- Year 11: Maximum 8 hours per week
- Year 12: Maximum 10 hours per week

As well as this, students in Year 12 have a supervised study line at the College for homework and assignments.

Completion of Homework

If a student is unable to complete set homework, he/she must present a signed explanation from parents/caregivers to the subject/class teacher or email notification must be received by the relevant subject teacher from parents/caregivers.

Submission of Work (Years 7-12)

If a student is not able to meet a deadline due to extenuating circumstances, he/she must:

- Negotiate an extension (using the appropriate form) with the relevant subject teacher before the due date.
- Bring a signed explanation (using the appropriate form) for the need of an extension from parents/caregivers before the due date;
- Provide a medical certificate (if required).

In the event that a student has not completed an assessment task for a subject by the deadline, where the student (including drafts and checkpoints) has not sought an extension, a 'Work Completion' notification is issued.

The subject teacher completes the Work Completion notification within SEQTA and ensures that the parents are notified of the missed deadline. The student then has until 5.00pm the following school day to submit the task, at which point the task will be assessed and graded without penalty. If the assessment task is not submitted by the new deadline, the Subject Teacher will record 'incomplete' into SEQTA which results in a zero grade. Teachers can provide feedback on any work submitted after this final deadline, however, the zero result will stand for formal assessment purposes.

Nazareth has high expectations for all students to be organised, prepared and willing to put effort into their studies. Students experiencing continual difficulties in the meeting of deadlines are encouraged to contact their subject teacher in the first instance and, if required, the Leader of Teaching & Learning or House Leader to discuss the matter further.

Supporting Your Child's Learning

We encourage all parents/caregivers to take an interest in your child's learning by listening, talking things over, problem solving together, encouraging reading and/or suggest writing. This is the sort of interest that stimulates your child to turn knowledge into action - that is an ability to think out problems, arrive at informed opinions, communicate effectively, make decisions and take action.

EXTRA SUPPORT & CURRICULUM EXTENSION

Nazareth aims to cater to a variety of student needs. As an extension to the Curriculum we offer:

- Academic Support
- EAL (English as an Additional Language) Support
- Flexible Learning
- Gifted and Talented Program
- Inclusive Education
- Literacy Support Classes
- Literacy Intervention: 'MiniLit' and 'MacqLit' (Findon)
- Maths Support
- Vocational Education and Training (VET)
- Work Completion Support



Photo by Sam Noonan

GIFTED & TALENTED

Nazareth aims to provide a tailored instructional program to meet the needs of all students who fall under our gifted and talented umbrella. Through the identification and implementation of individual educational experiences and programs, we encourage our students to extend themselves in additional tasks. With small group and/or individual support and intervention, we are able to provide a quality curriculum for our gifted students that is enhanced by an emphasis on critical, creative and ethical thinking skills.

ENRICHMENT ACTIVITIES & COMPETITIONS

Students at Nazareth have the opportunity to participate in enrichment activities spanning a variety of disciplines. All students are invited and encouraged to engage in as many opportunities as they wish. A small cost is associated with some activities to cover entry costs and where possible support is provided to students to provide them with the necessary grounding to ensure success, particularly in competitions.

More information about enrichment activities and competitions can be found on the [College Website](#).

CO-CURRICULAR ACTIVITIES

At Nazareth students are strongly encouraged to be involved in co-curricular opportunities. It is our belief that co-curricular activities develop positive attitudes, commitment, responsibility, leadership and the ability to work within a team environment. There are many opportunities for extra-curricular involvement.

Sport

The Sports Coordinator organises teams, however sport teams can only succeed through the generous support of our coaches who manage the teams. In addition to the extra-curricular sport program, students are involved in several carnivals which form the basis of their physical education skill development lessons.

At all times students and parents are asked to remember that they are representing their school on the sporting field and should therefore act accordingly.

For more information pertaining to sport, please access the [Sports Handbook](#).

Music

Music at Nazareth is designed to facilitate individual knowledge and skill development as well as social development for our students through their primary and secondary years and beyond. Every primary student has a connection to the music program at Nazareth; either through involvement in an ensemble, choir or instrumental study. This is an important part of life at our College, as we seek to nurture children's enjoyment and understanding of music. Performances by ensembles, bands and choirs are consistently incorporated into life at Nazareth.

For specific information pertaining to music, please access the [Music Handbook](#).

Other

A variety of other co-curricular programs are also on offer at Nazareth, from debating, chess and e-sport to pedal prix and more. Further information about co-curricular involvement at Nazareth can be found [on the College website](#).

It is important to note that some co-curricular activities incur additional costs to families (e.g. to participate in co-curricular sports at Nazareth there is an annual 'pay to play' fee of \$150, and similarly, music band participation may require instrumental hire, which is provided by the College at a cost to families).

COMMUNICATION

We have a wide array of methods to ensure effective two way communication between families and the College. We use a range of strategies to regularly seek and share information about students' achievements and learning needs, school policies and community initiatives. Please read below for detailed information about how we communicate at Nazareth:

ESSENTIALS

Phone



What to expect via phone:

- Medical updates (injuries, accidents or illness)
- Wellbeing and academic progress

Administrative personnel are on hand during business hours to field your enquiries, answer questions, process some forms, and take messages. During class time R-12 teaching staff are not available to take calls. Early Childhood Centre families are encouraged to contact their child's room directly should they wish to speak with a teacher or educator about their child.

Email



The primary form of online dissemination of key timely information for families. It is essential that email addresses are kept accurate, current and regularly checked. Families are encouraged to communicate with us through email at their convenience. Wherever possible, a response can be expected within 24 hours on Monday to Friday.

What to expect via email:

- Community announcements
- Weekly newsletter
- Feedback opportunities
- Information directly related to your child including pastoral notifications
- SEQTA notifications
- Co-curricular information
- Services available for families such as OSHC, family support etc
- Key event information

SEQTA



This is the main source of teaching and learning information for your child.

- The URL to access SEQTA Engage is parents.nazareth.catholic.edu.au
- There is an equivalent form of access for students called SEQTA Learn at students.nazareth.catholic.edu.au

* SEQTA is not used at the Early Childhood Centre (ECC)

What to expect via SEQTA:

- Assessment results and feedback (Assessments)
- Teaching & learning content and topics (Courses)
- Student semester reports (Reports)
- Medical & Wellbeing notices (Dashboard)
- Daily notices function (7-12 only) (Notices)
- Access to student timetables (7-12 only) (Timetable)
- Some relevant policies (Documents)
- Some booking links eg learning conversations (Portals)

Newsletter



The newsletter shares information from across our entire community, including ECC, R-12 College and community services. Whilst not all information may be relevant to your family, structuring the newsletter in this way enables us to provide a whole community perspective.

What to expect via the weekly newsletter:

- Weekly information, articles, photo galleries, event information, successes and results, sporting results and calendar dates.
- Directly emailed to all families, and subscribers each Tuesday.
- The newsletter is also available on the Nazareth website.

Our Website



A key source of information for both current and potential families within our community.

The URL to access the Nazareth website is www.nazareth.org.au

A link to the SEQTA Engage portal is also on our website.

What to expect on our website:

- Calendar dates and ticket links for events
- Uniform and canteen information
- Policies and forms including finance information
- Sporting fixtures, music tuition and timetables
- Newsletter and other publications such as the Aspire Magazine
- College Tour and Open Day dates
- Employment opportunities
- Sacramental program and Outreach information
- Community services and programs

Meetings



Meeting times are scheduled for Learning Conversations across R-12 and the 3-5 year old neighbourhood at the Early Childhood Centre. Learning Conversations are formally offered twice a year on each campus, allowing one on one communication about your child. These dates are listed on our web calendar. Outside of formal Learning Conversations, we encourage families to arrange face-to-face meetings with staff as required. Contact our Campus Reception staff or individual staff members to make a meeting appointment.

OPTIONAL

Social Media



Our community proudly uses various social media including:

- Facebook
- Twitter
- LinkedIn
- YouTube

We also maintain and manage a number of closed Facebook groups including:

- Nazareth Transition to Secondary group
- Nazareth Catholic College Graduates group
- Short term closed groups based on co-curricular trips. (Groups are closed shortly after the trip ceases).

Other Facebook groups, such as the Primary Parent Facebook group and Secondary Parent Facebook group, are also closed groups, allowing discussion and sharing of information, however it is important to note that these pages are not managed or administered by Nazareth.

We encourage families to follow our official pages.

What to expect via social media:

- Sharing of news, successes and highlights
- A 'behind the scenes' perspective
- Daily information on activities, programs and events around teaching, learning, curriculum and wellbeing
- Parental engagement and comments - a mode for two way communication between school and home
- Upcoming events and initiatives
- Feedback, collaboration and contribution from the wider community

Seesaw App



The SeeSaw is available for R - 6 families and is a platform used to share student learning with families.

What to expect via the SeeSaw App:

- Photographs of your child's classroom learning (a minimum of 2 items per term)

Consent2Go



Consent2Go is an online platform that allows you to authorise student involvement in activities and excursions. It is also the primary way that you can keep us informed or updated about your child's medical information.

You can access this system in two ways:

1. Using an email that has been sent to you regarding a specific excursion or event. Click on the link and follow the instructions.
2. Via the link on our website www.nazareth.org.au/consent2go



General email address: info@nazareth.org.au

Teaching/education staff: <first name>.<surname>@nazareth.catholic.edu.au

Early Childhood Centre staff: <first name>.<surname>@nazareth.org.au

Community/operations staff: <first name>.<surname>@nazareth.org.au



General switchboard: 8406 5000

Student Absentee Line: 8406 5105 (R-6) or 8406 5305 (7-12)

Uniform Shop: 8351 7486



parents.nazareth.catholic.edu.au

students.nazareth.catholic.edu.au



www.nazareth.org.au/newsletter



www.nazareth.org.au



[nazarethcatholiccommunity](https://www.facebook.com/nazarethcatholiccommunity)



[Nazareth Catholic Community](https://www.youtube.com/NazarethCatholicCommunity)



[Nazareth Catholic Community](https://www.linkedin.com/company/nazarethcatholiccommunity)



SCHOOL BUSES FOR FLINDERS PARK & KIDMAN PARK CAMPUSES

Parents/Caregivers of students using regular bus services are advised to check the Adelaide Metro website to ensure they have the most current timetable. This website also provides the ability to obtain estimated departure times for their service from a specific bus stop.

For further information, please contact Adelaide Metro Passenger Transport Info Line on 1300 311 108 or the Adelaide Metro website: www.adelaidemetro.com.au or the Torrens Transit Bus Depots on 8366 8300 (Newton); 8444 2200 (Pt Adelaide); 8179 7400 (Camden Park); 8292 8100 (Mile End).

SCHOOL BUS SERVICES

For a full list of Adelaide Metro routes servicing Nazareth, [click here](#).

664 - Nazareth to Alberton

School service, operates school days only. Servicing Nazareth. Travels via Semaphore, Largs Bay, Largs North, Taperoo, North Haven, Outer Harbor, Osborne and Port Adelaide.

663 - Nazareth to Fulham

School service, operates school days only. Servicing Nazareth. Travels via Flinders Park, Fulham Gardens and Henley Beach.

661 - Nazareth to Delfin Island

School service, operates school days only. Servicing Nazareth. Travels via Flinders Park, Findon, Seaton, Royal Park and West Lakes.

653 - Alberton to St Michael's College Secondary Campus & Nazareth

School service, operates school days only. Servicing Seaton High School, St Michael's College Secondary Campus, St Michael's College Primary Campus and Nazareth. Travels via Largs North, Seaton, Henley Beach and Fulham Gardens.

652 - Alberton to St Michael's College Primary Campus

School service, operates school days only. Servicing Nazareth, St Michael's College Secondary Campus and St Michael's College Primary Campus. Travels via Largs Bay, Semaphore, West Lakes, Tennyson, Grange, Fulham Gardens and Kidman Park.

656 - St Michael's College Primary Campus to Henley Beach South

School service, operates school days only. Servicing Nazareth, St Michael's College Secondary Campus and St Michael's College Primary Campus. Travels via Kidman Park, Fulham Gardens, Henley Beach and West Beach.

650 - Alberton to St Michael's College Secondary Campus

School service, operates school days only. Servicing Henley High School, St Michael's College Secondary Campus and Nazareth. Travels via Hendon, Seaton and Grange.

654 - Henley Beach to St Michael's College Primary Campus

School service, school days only. Servicing Henley High School, Nazareth, Seaton High School and St Michael's College Primary Campus. Travels via West Beach, Fulham, Seaton, Findon and Flinders Park.



OTHER BUS ROUTES SERVICING NAZARETH FLINDERS PARK AND KIDMAN PARK CAMPUSES:

The 100 route operates in both directions and travels along Holbrooks Rd adjacent to the College (nearest stop is Stop 205 Holbrooks Rd). The 286-287 (City to Henley Beach) and 288 (City to West Lakes) services travel along Hartley Rd in both directions adjacent to the College (nearest stop is Stop 14 Hartley Rd).

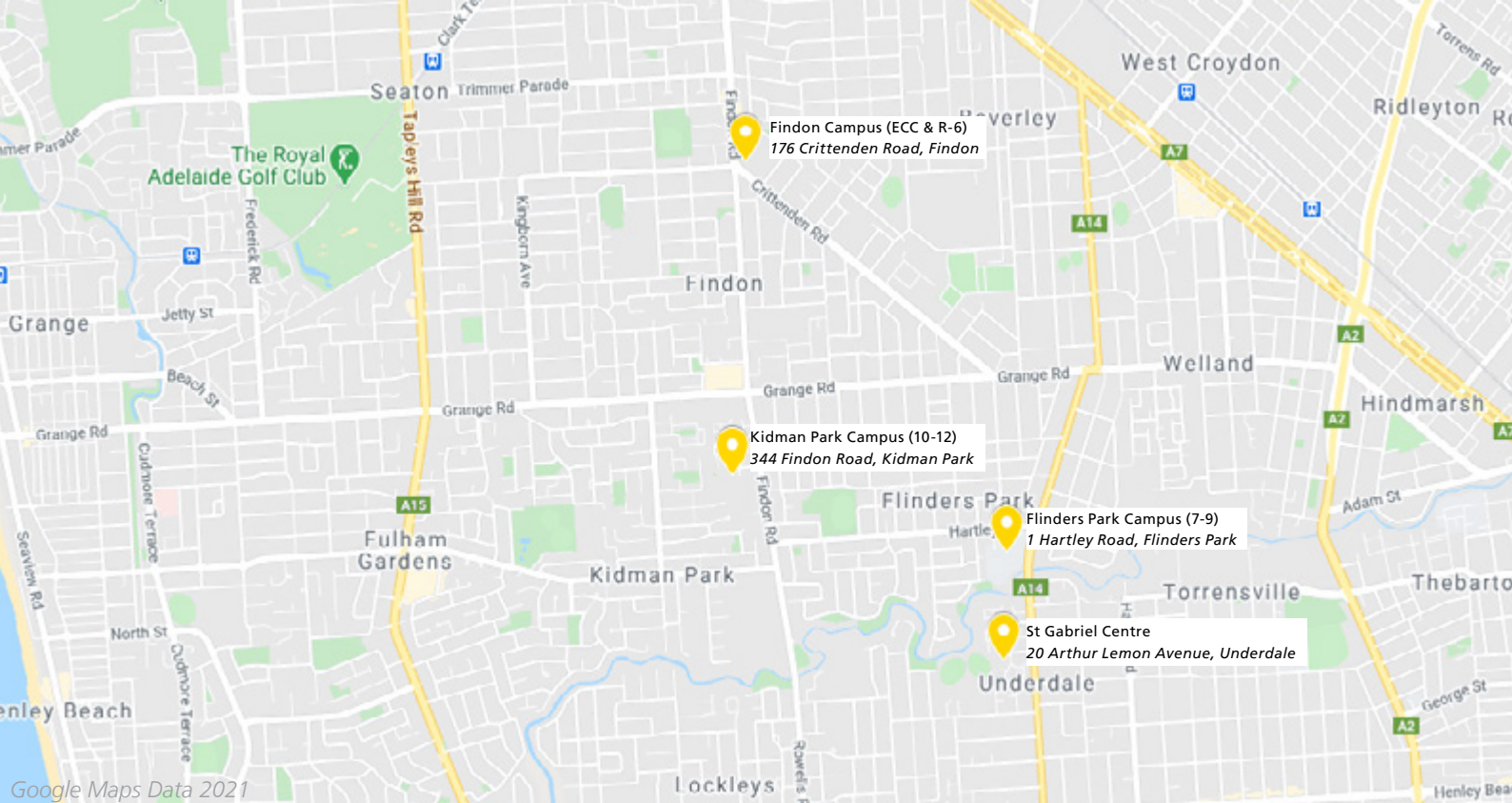
Please refer to the relevant public timetables for full details of route descriptions, service times and frequency on the Adelaide Metro website: www.adelaidemetro.com.au

BUS TICKETS

All Torrens Transit bus services, including the above School Buses operate on the Metroticket system. Current Primary and Secondary student fares can be found on the Adelaide Metro website www.adelaidemetro.com.au

Singletrip tickets may be purchased on-board buses; while Metrocards can be purchased from outlets listed on the Adelaide Metro website www.adelaidemetro.com.au

Students 15 years or over must travel with an approved Student Identification Card if not wearing a recognisable school uniform (if using a student ticket). Fare prices are set by the SA Government and normally change in the first week of July each year. Tickets are also available from the Veritas Centre, Flinders Park Campus or Student Services at the Kidman Park Campus.



CONTACT & LOCATIONS

PO Box 28 Findon SA 5023
T 08 8406 5000

info@nazareth.org.au
www.nazareth.org.au

FINDON CAMPUS

176 Crittenden Road, Findon SA 5023

Early Childhood Centre | Entry from Almond Avenue

Primary Years | Reception - Year 6

Our Lady of the Manger Church

FLINDERS PARK CAMPUS

Middle Years | Years 7-9

1 Hartley Road, Flinders Park SA 5025

St Gabriel Centre

20 Arthur Lemon Avenue, Underdale SA 5032

KIDMAN PARK CAMPUS

Senior Years | Years 10-12

344 Findon Road, Kidman Park SA 5025

UNIFORM SHOP

260 Grange Road, Flinders Park SA 5025

Open Tuesdays & Thursdays

T 08 8351 7486

STUDENT SERVICES & ABSENTEE PHONE LINES

Findon Campus (R-6 College)

Student Services 8406 5110

Absentee Line 8406 5105

Flinders Park Campus (7-9 College)

Student Services 8406 5300

Absentee Line 8406 5305

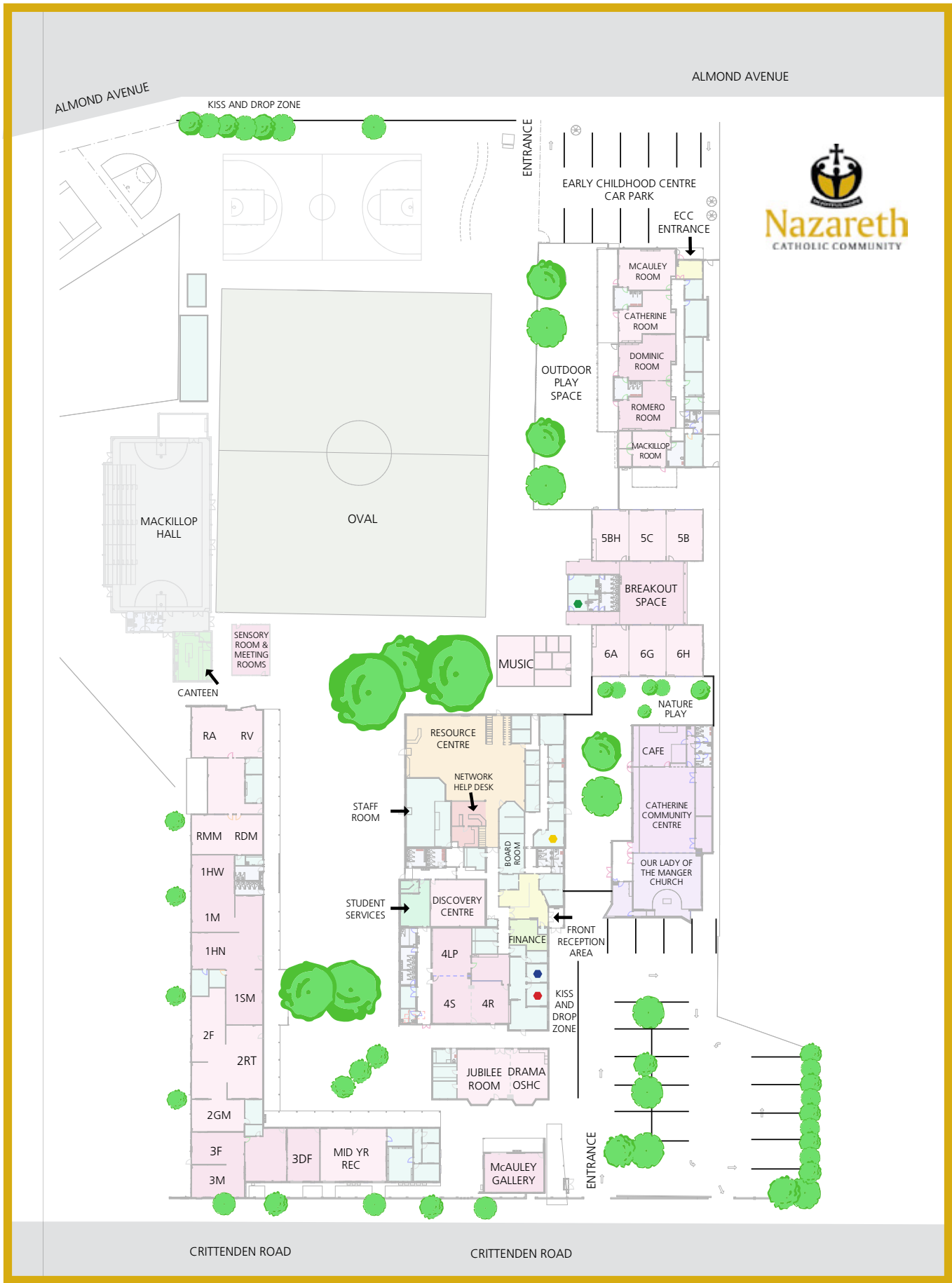
Kidman Park Campus (10-12 College)

Student Services 8406 5200

Absentee Line 8406 5305

FINDON CAMPUS MAP

Findon Campus



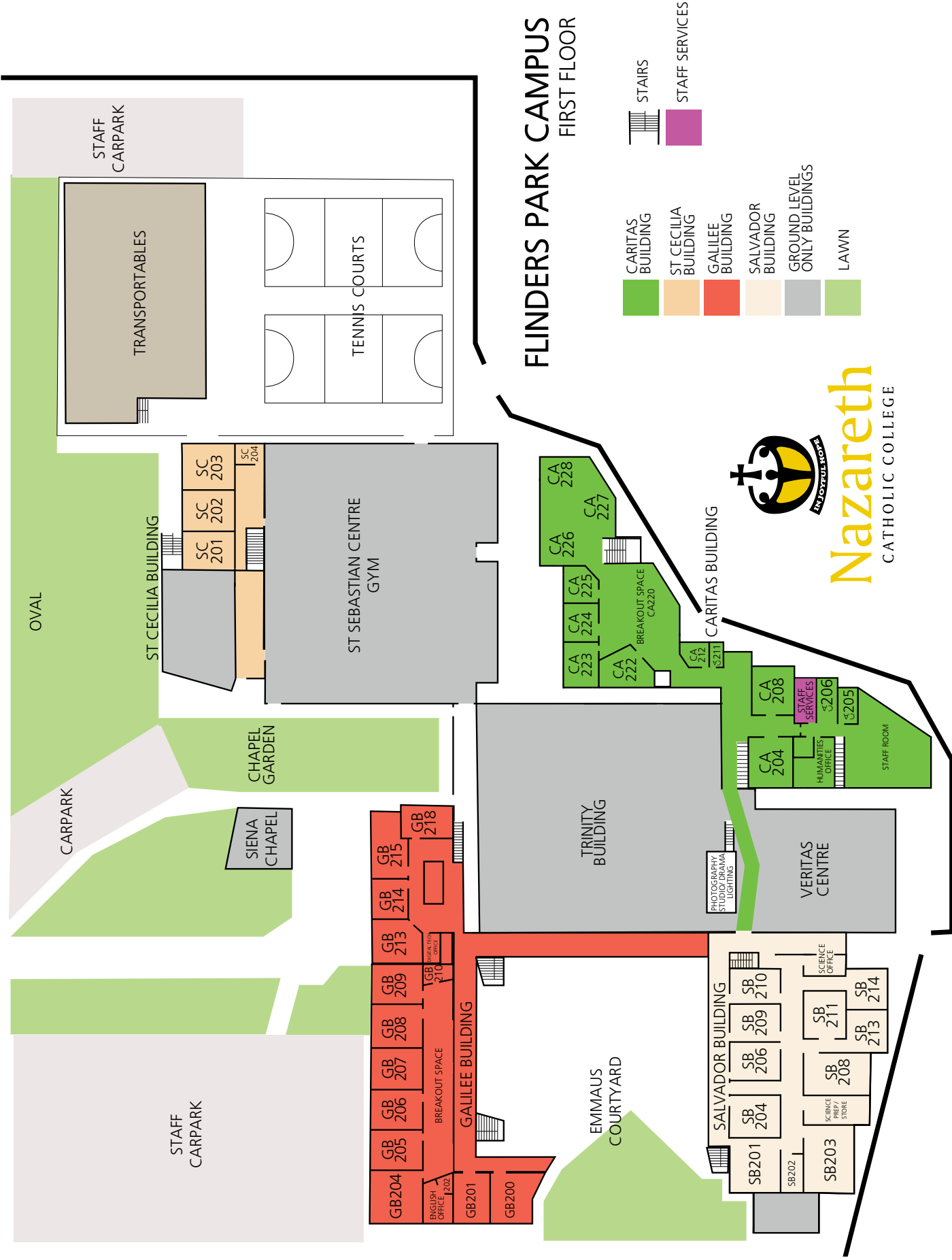
FLINDERS PARK CAMPUS MAP

GROUND FLOOR



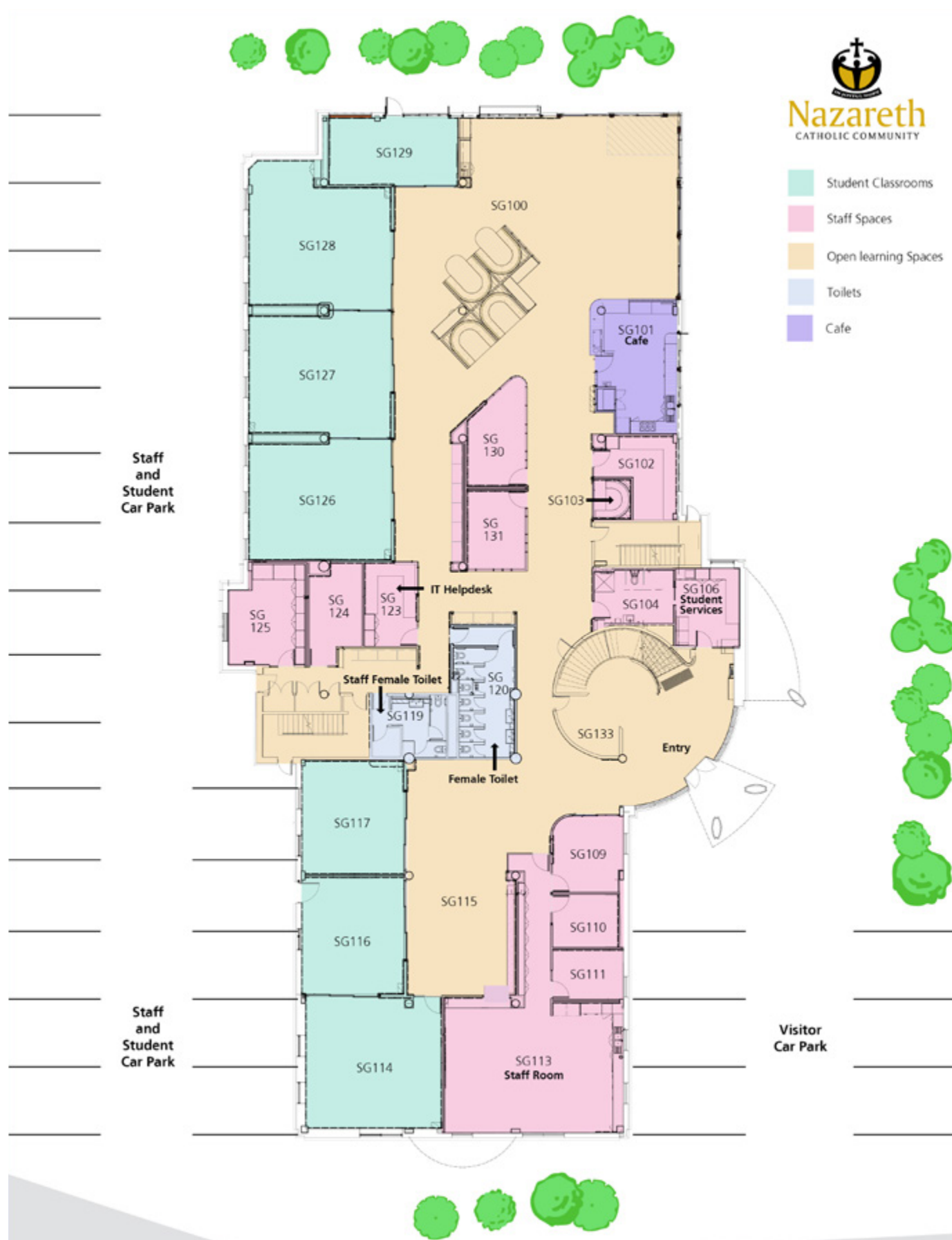
FLINDERS PARK CAMPUS MAP

FIRST FLOOR



ST GABRIEL CENTRE MAP

GROUND FLOOR



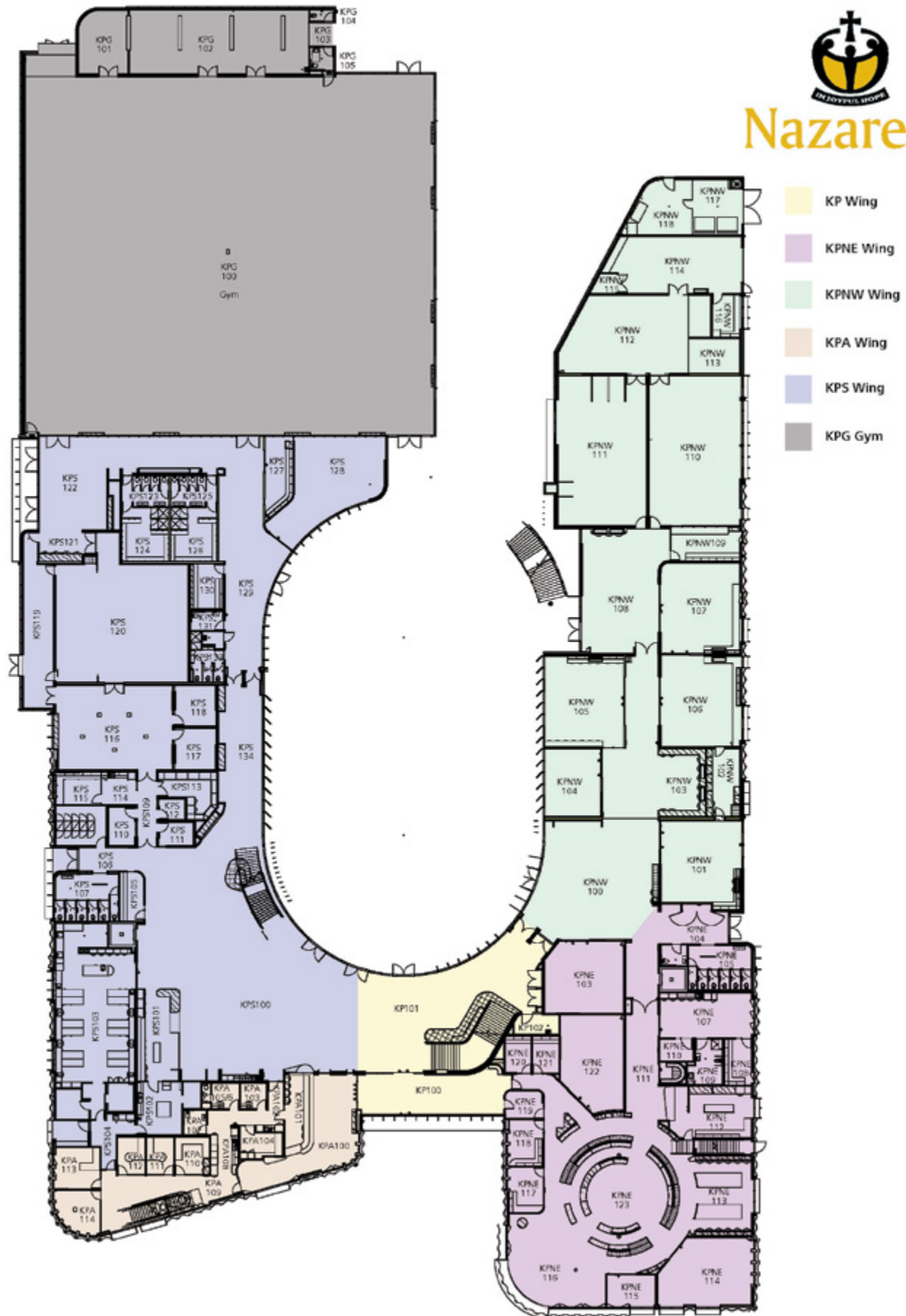
ST GABRIEL CENTRE MAP

FIRST FLOOR



KIDMAN PARK CAMPUS MAP

GROUND FLOOR



Nazareth

- KP Wing
- KPNE Wing
- KPNW Wing
- KPA Wing
- KPS Wing
- KPG Gym

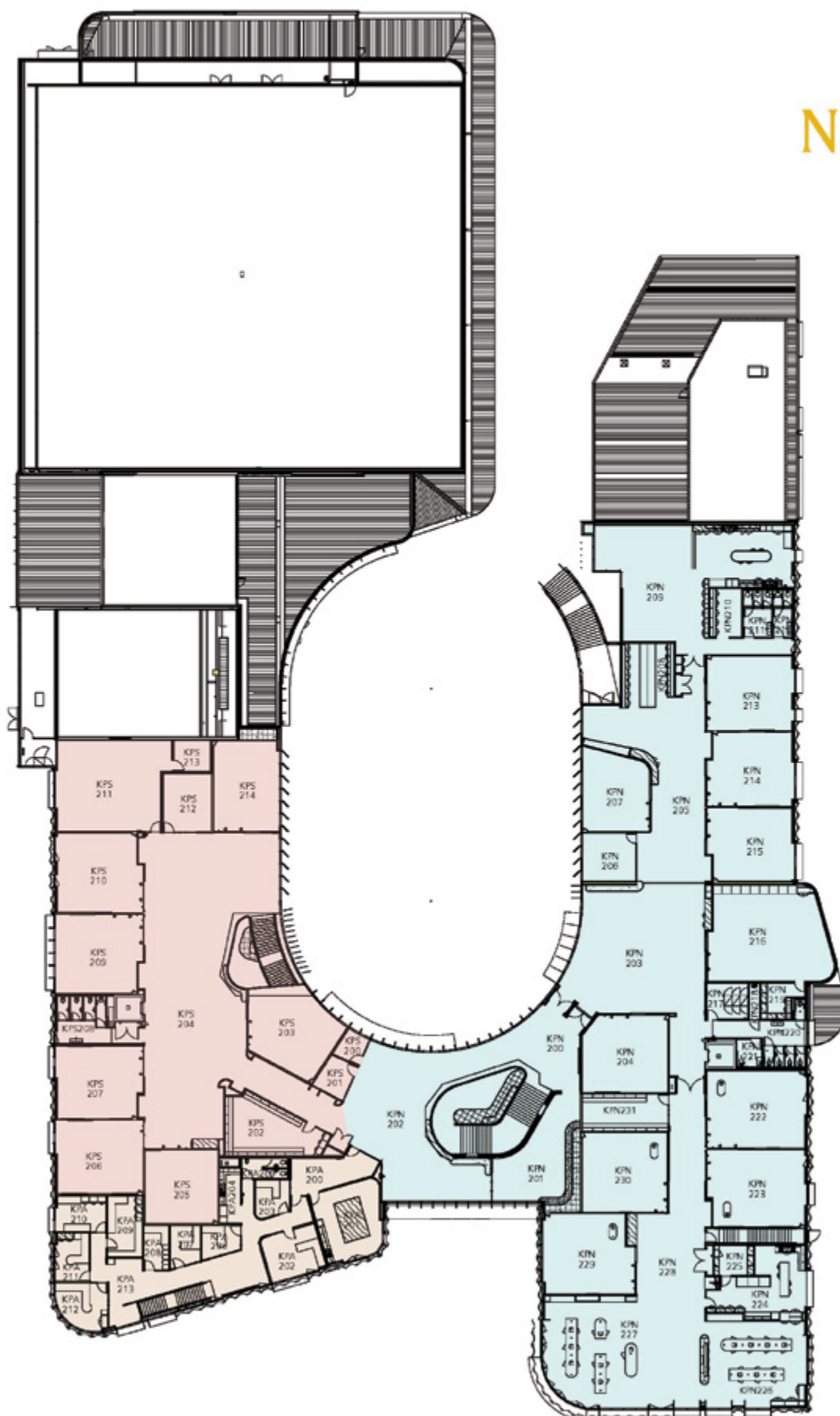
KIDMAN PARK CAMPUS MAP

FIRST FLOOR



Nazareth

- KPN Wing
- KPA Wing
- KPS Wing
- KPS Wing





USEFUL LINKS

Nazareth Website nazareth.org.au

Social Media @NazarethCatholicCommunity



Catholic Education South Australia cesa.catholic.edu.au

Rory's School Lunches www.rorys.com.au/

Child Care Benefit Information humanservices.gov.au

Catholic School Parents South Australia (CSPSA) www.cspsa.catholic.edu.au



Nazareth

PO Box 28 Findon SA 5023

T 08 8406 5000

info@nazareth.org.au

www.nazareth.org.au

FINDON CAMPUS

176 Crittenden Road, Findon SA 5023

Early Childhood Centre (ECC)

Primary Years | Reception - Year 6

Our Lady of the Manger Church

FLINDERS PARK CAMPUS

Middle Years | Years 7-9

1 Hartley Road, Flinders Park SA 5025

St Gabriel Centre

20 Arthur Lemon Avenue, Underdale SA 5032

KIDMAN PARK CAMPUS

Senior Years | Years 10-12

344 Findon Road, Kidman Park SA 5025